

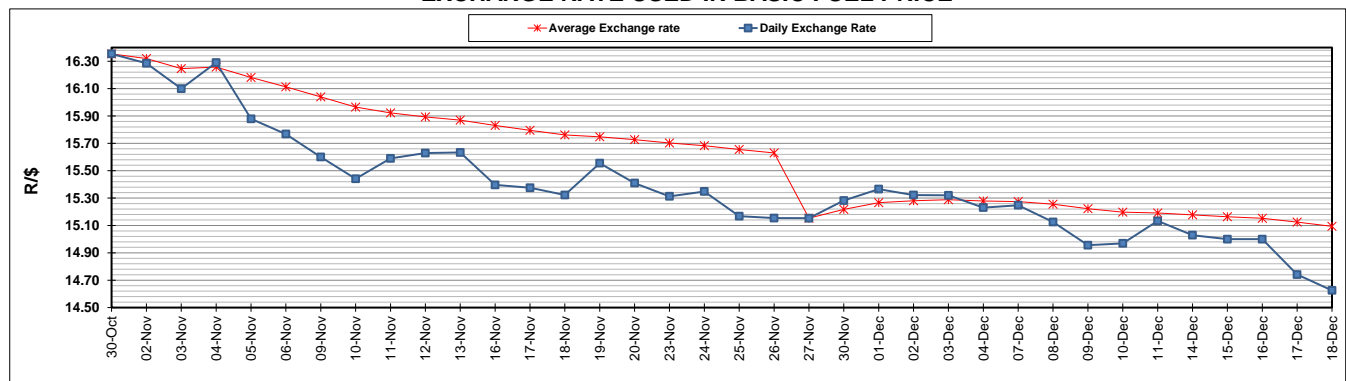
	PETROL 95 ULP	PETROL 93 ULP & LRP	DIESEL 0.05%	DIESEL 0.005%	ILL. PAR.
GAUTENG PUMP PRICE (SA c/l) AS FROM 02/12/2020	1,446.000	1,426.000	-	-	-
WHOLESALE PRICE (SA c/l) AS FROM 02/12/2020	-	-	1,245.420	1,247.820	684.688
SINGLE NATIONAL MAXIMUM RETAIL PRICE	-	-	-	-	856.000
BASIC FUEL PRICE - 18/12/2020 (SA c/l)	535.234	530.561	549.359	550.583	539.261
PRESS RELEASE CONTRIBUTION TO BFP 02/12/2020 - 18/12/2020 (SA c/l)	479.170	469.170	486.630	489.030	472.128
UNIT OVER/(UNDER) RECOVERY - 18/12/2020 (SA c/l)	(56.064)	(61.391)	(62.729)	(61.553)	(67.133)
AVERAGE BASIC FUEL PRICE 27/11/2020 - 18/12/2020	519.773	513.549	538.785	540.030	523.236
AVERAGE UNIT OVER/(UNDER) RECOVERY 27/11/2020 - 18/12/2020	(35.484)	(39.260)	(54.405)	(53.250)	(55.045)

### ANALYSIS MOVEMENT OF AVERAGE OVER/(UNDER) RECOVERY

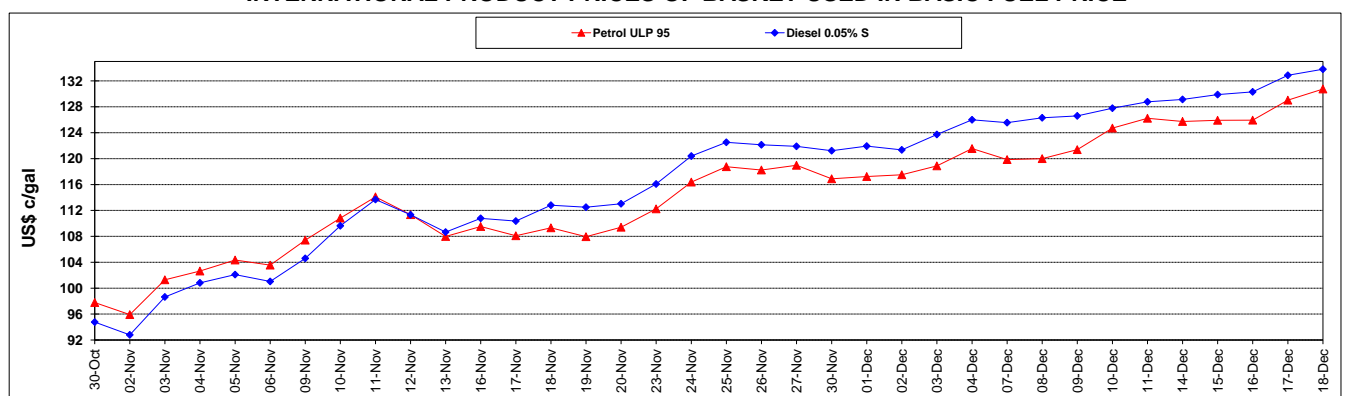
	PETROL 95	PETROL 93	DIESEL 0.05%	DIESEL 0.005%	ILL. PAR.
- MOVEMENT IN INTERNATIONAL PRODUCT PRICES	(53.969)	(57.524)	(73.567)	(72.456)	(73.654)
- MOVEMENT IN EXCHANGE RATE	18.485	18.264	19.162	19.206	18.609
AVERAGE UNIT OVER/(UNDER) RECOVERY 27/11/2020 - 18/12/2020	(35.484)	(39.260)	(54.405)	(53.250)	(55.045)

**R/\$ EXCHANGE RATE - (R/\$14.6255 - 18/12/2020)**

### EXCHANGE RATE USED IN BASIC FUEL PRICE



### INTERNATIONAL PRODUCT PRICES OF BASKET USED IN BASIC FUEL PRICE



### BASIC FUEL PRICE IN SA CENTS PER LITRE

